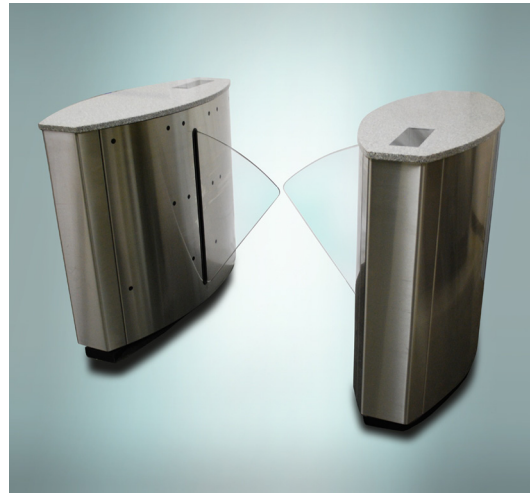


Model 7000-RG

Retracting Glass Optical Turnstile



Manufacturer: Delta Turnstiles, LLC, is an American manufacturer of quality optical turnstiles, based in Concord, CA.

Description: The Delta 7000-RG is a bi-directional optical turnstile with a retracting acrylic barrier wing panels. It can be used as a purely optical turnstile or as a barrier-type optical turnstile. When in “barrier mode” the acrylic wings act as an additional visual deterrent to unauthorized access attempts.

Method of Operation: An access card or other credential is presented to the customer supplied access control reader mounted inside the casework. If entry is authorized, the Traffic Flow Indicator (TFI) will light as a green arrow pointing in the direction authorized, the barriers will open, and a chime will sound indicating to the user that they may pass. Unauthorized access attempts and tailgaters are singled out by local visual/audible alarms and access control system event condition.

Unique Features:

- Fan shaped beam pattern reduces installation/alignment concerns
- Simplified plug-n-play installation and parts replacement
- Integrated steel frame for strength, beauty, and durability
- 1/4 “ gap anti-tailgating detection range
- Direct drive barrier arm system
- Capable of simultaneous bi-directional multiple card stacking
- Includes multiple direction use attempt detection
- Equipped with anti-crawl through detection
- Reduces false alarms - Differentiates between tailgaters, wheeled laptop bags, and carried items
- Main and secondary interconnect boards are located at secure end of pedestal to prevent tampering
- Barriers open automatically in exit direction for fire condition
- Multiple relay outputs (7) allow for detailed event monitoring by access control system
- Three (3) year warranty
- Lead time of 4 to 6 weeks on standard products



Construction Materials

- Pedestal Body:** Grained stainless steel finish with integrated steel frame. Radius casework construction such that no exposed seams appear at leading edges. Optional grained brass, or powder coated steel in client's choice of colors. Side panels are easily removable for maintenance.
- Pedestal Top:** Corian™ type solid surfacing single tier top, in choice of colors. Optional custom materials to customer specification (i.e.; natural stone).
- Barriers:** Sliding acrylic barrier wings, constructed of 1/2 inch acrylic.

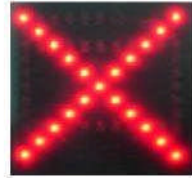
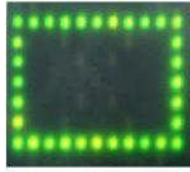
Dimensions

- Pedestal:** Each Delta 7000-RG standard pedestal is 12"W x 38" H. The ADA pedestal is 20"W x 38"H.
- Delta 7000S-RG (squared end pedestals)** - Standard pedestal is a 45"L.
- Lane:** The standard lane width (distance between pedestals) is 22" for pedestrian lanes, and 36" for handicap accessible (ADA) lanes.

Technology

- Optical Detection:** Industrial duty infrared photoelectric beams (14) linked to Primary Interconnect Board (PIB) 32-bit microprocessor.
- Drive System:** Direct drive barrier/motor system – no belts to replace.
- Sound Card:** The Delta SC01 Card emits 5 different tones to indicate lane status – i.e.; valid transaction, invalid card, unauthorized access attempt, or tailgate attempt. Digitally controlled, the SC01 allows for volume adjustment on-board pedestal or through the optional color touch screen (RLC).
- Reader Integration:** Card Reader mountings for prox readers are located at both ends, immediately under the TFI. Swipe readers, biometric readers, or other access control systems can be integrated at both ends through coordination between access control dealer and Delta.
- Power:** A 240w 24VDC 10A power supply is provided by manufacturer for each set of up to 3 lanes. 120V 15A circuit should be provided on site.

Status Lights: Traffic Flow Indicators (TFI's) are fitted into the pedestal tops, one for each direction, to visually assist the user when passing through the lane.



Crawl Detection: Specially located IR beams detect crawl-through attempts, as low as 11" from the floor, and will trigger a visible and audible alarm and appropriate signal to the access control system.

No-Touch Barriers: The Delta 7000-RG integrates the IR beams and barrier arms in such a way as to significantly reduce the occurrence of pedestrian contact with the barrier arms.

Bi-directional Card Stacking: The system's memory is capable of receiving up to 100 authorized cards, and then allowing passage for those cardholders. Barriers remain in the open position for successive authorized transactions. This feature is actively available in both directions simultaneously.

Safety Features: The Delta 7000-RG is equipped with "fail safe" operation mode which powers the barriers to the open position in case of emergency. In the event of power outage, the barriers push open with very little force. In the unlikely case of closed barriers with power on during emergency, the product is designed with "soft barriers" that can be easily forced open.

Other Features

ADA (Handicap) Accessibility: The lanes can be set to 36" width for ADA (Americans with Disabilities Act) compatibility, with no loss of function or security.

Optional Crawl Over Detection: Detects an intruder attempting to walk or crawl along the pedestal top to gain entry into the building.

Installation: Simple "plug & play" installation by qualified access control integration professional. Pedestals are easy to align due to fan-shaped IR beam pattern. Optional 7000-MP mounting platforms reduce need for cutting floor.

Quality Control Program: Delta maintains a strict quality control program covering all steps of the project from order accuracy through production to delivery.

Manufacturer's Warranty: Three (3) year return-to-factory warranty on all parts/components. Installing dealer (access control integrator) is responsible for minimum one (1) year labor warranty.

Accessories

Remote Lane

A remote lane control console is available for each set of Delta 7000-RG lanes.

Controller (RLC):

The RLC provides lane status information and allows for remote controlling of lane operation and sound card volume.

**Mounting Plates
(Delta 7000-MP):**

The Delta 7000-MP is an optional system of interlocking keyed plates constructed of welded structural steel, feather edged walkways, and precision point leveling feature to allow for floor variations such as in landmark historic lobbies. Maximum rise is 2" in center.

Typical Lane Layout

Delta 7000 RG
Typical 2 lane/3 pedestal set
Front View

